

Cheakamus Community Forest

INFORMATION SESSION

NOVEMBER 24, 2023

SQUAMISH LIL'WAT CULTURAL CENTRE



**And now for something
completely different...**

Agenda

- **Introductions, Guidelines**
- **Presentation – CCF Vision**
- **Break**
- **Discussion Tables**
- **Presentation – How the CCF serves the community**
- **Share thoughts**
- **Fill out comment sheets**

Guidelines

- Focus will be on **learning from one another**
- **Invite different perspectives**
- **Keep conversations in motion**
- Get **curious** about other views
- **Learn** something new
- There are **harvesting maps** at the side of the room

INITIAL THOUGHTS

- Introduce yourself to your neighbour
- Share why are you here
- Write down a word or phrase about the CCF



**CHEAKAMUS
COMMUNITY
FOREST**

WHO ARE WE?

LIL'WAT NATION
SQUAMISH NATION
RESORT MUNICIPALITY OF
WHISTLER

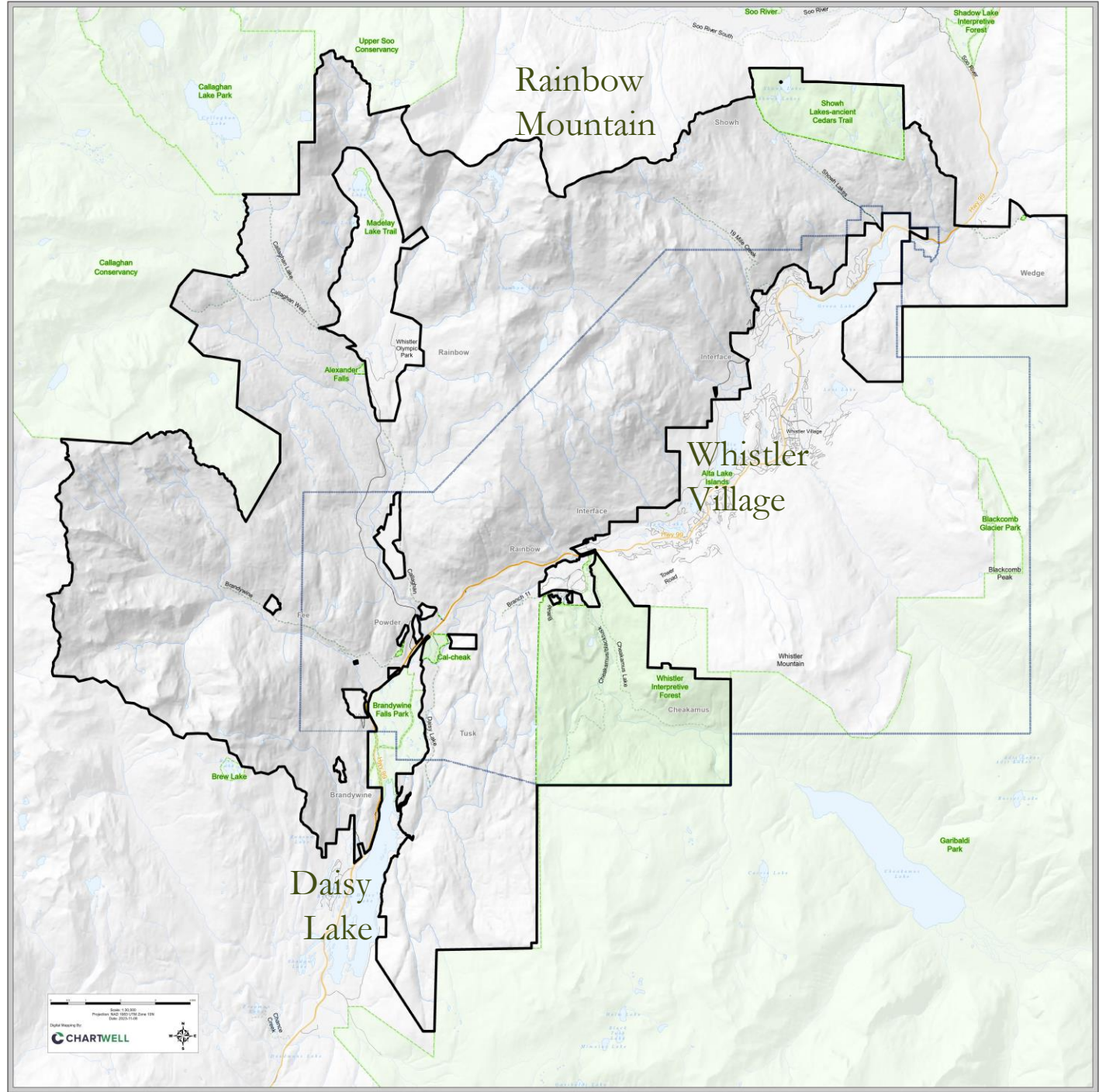


**CHEAKAMUS
COMMUNITY
FOREST**

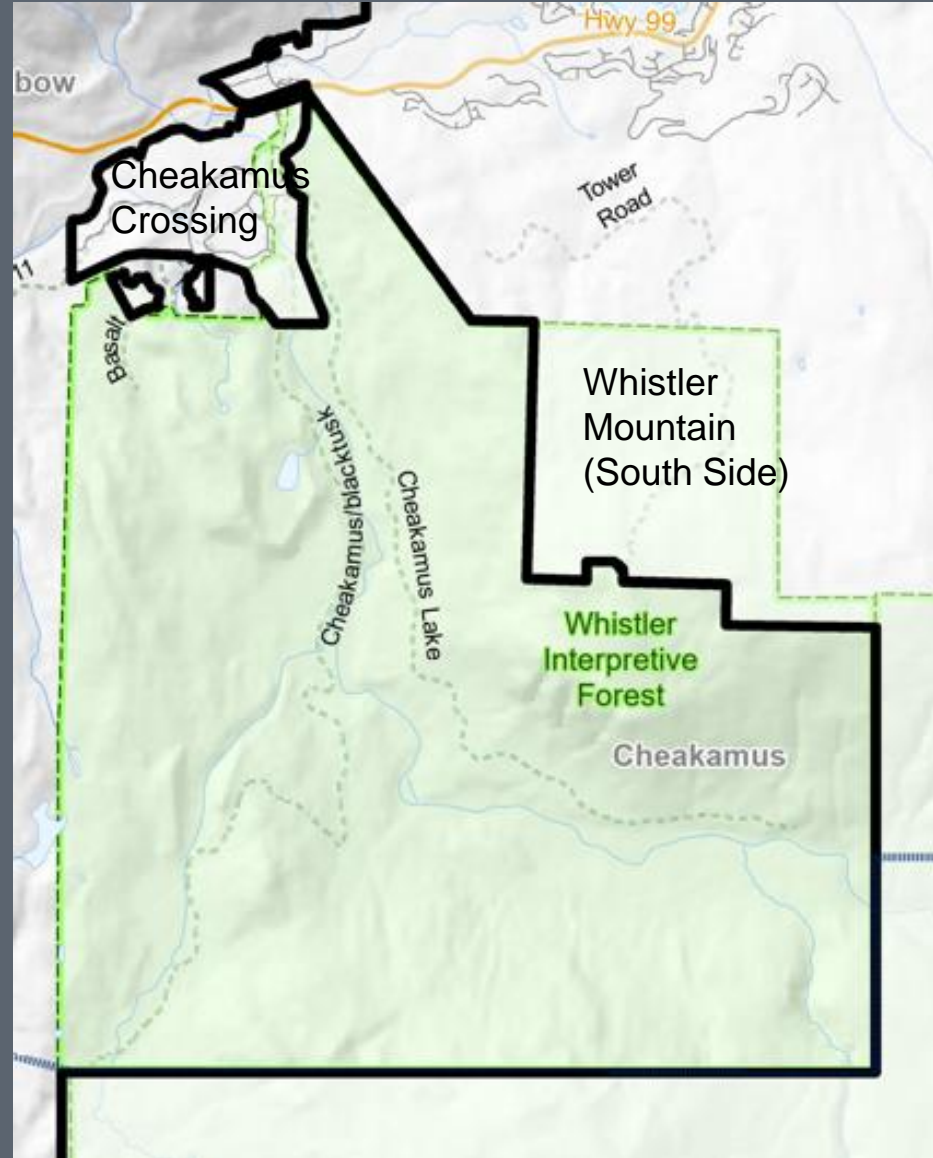
What is a Community Forest?

LOCAL CONTROL OVER LOCAL FORESTRY

an area-based licence operating on Crown land, that provides the exclusive right to harvest timber within the Community Forest Agreement area, and the right to manage botanical forest products



Whistler Interpretive Forest



CCF Vision

The CCF is a **model of regenerative forestry** that mitigates the impacts of climate change, and that the CCF partnership is recognized as a **model of reconciliation**, supporting the prosperity of the RMOW, Lil'wat and Squamish Nations through a thriving local economy.

CCF Mission

Prioritize the ecological health of local forests while **respecting their cultural significance** to the Lil'wat and Squamish peoples and generating direct economic benefits for the two First Nations and the citizens of Whistler.

Why is the CCF important to Lil'wat Nation?

- Helena Edmonds

Lil'wat Nation Councillor and Manager of Advanced Education at Ts'zil Learning Centre

CCF & Community Values

- Decision-making by the Nations on their traditional, unceded territories
- Ecosystem-based management
- Annual Allowable Cut is 50% less than Provincial regulations
- Half of the CCF is set aside from logging
- Carbon Project creates alternative revenue stream
- Community input makes a difference



How the CCF delivers its vision

- For the public
- For the Squamish and Lil'wat Nations
- For the RMOW
- For WORCA and the recreation community
- For research

Reflection & Final Comments

- Let's share some thoughts
- Leave comments
- Sign up for newsletter at cheakamuscommunityforest.com

