

# CHEAKAMUS COMMUNITY FOREST

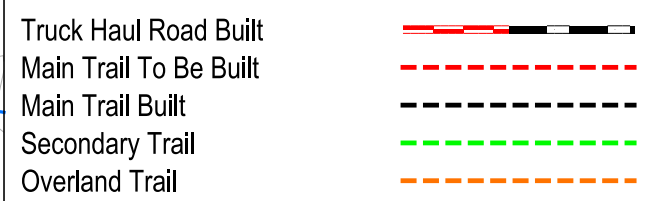
## COMPARTMENT PLANNING UNIT F03 ACCESS LOGGING PLAN MAP

Harvest Unit(s): **A...Y**  
 Location: **MID BRANDYWINE CREEK**

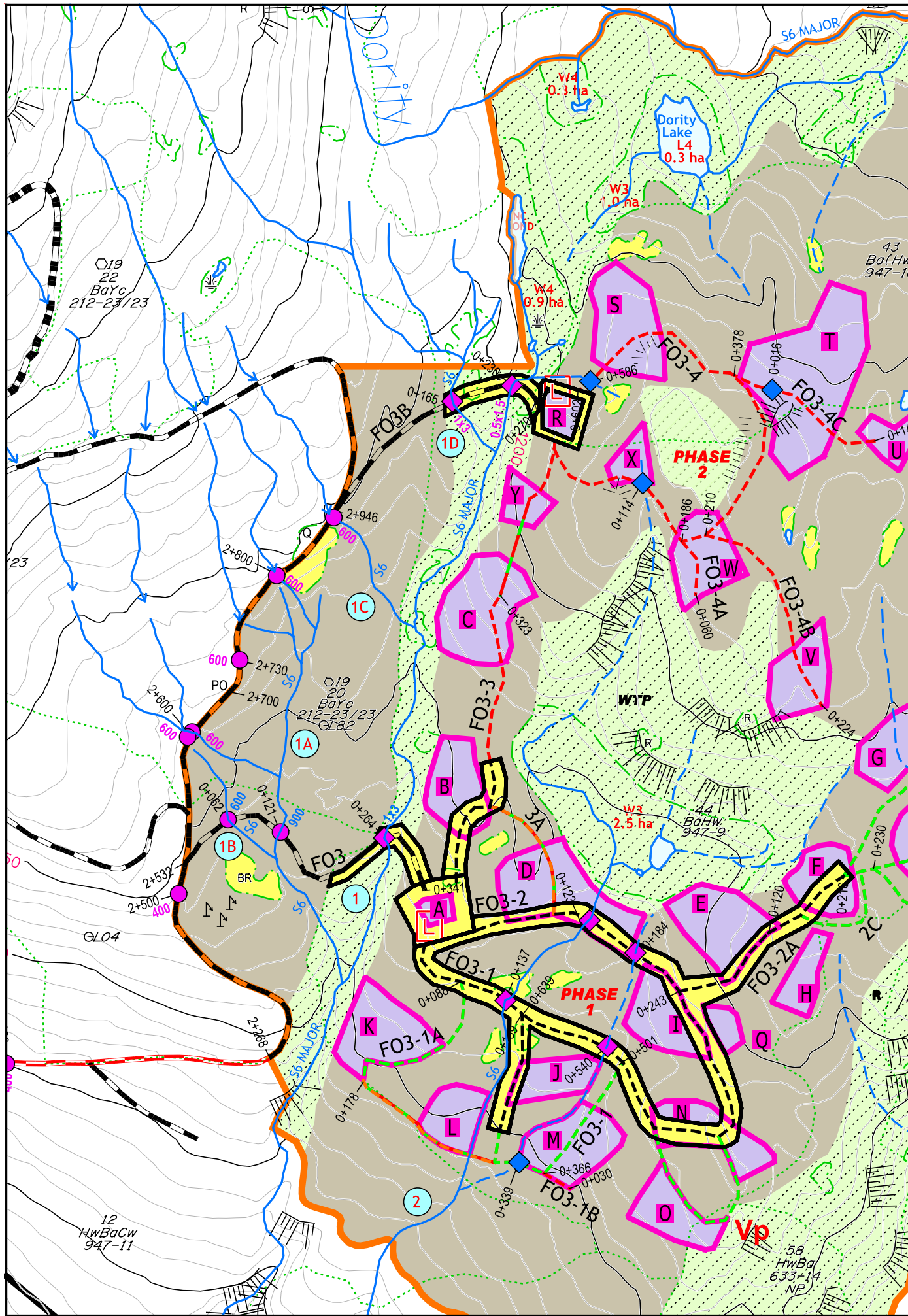
TENURE: **K3V** CP: **F03**  
 FOREST REGION: COASTAL MAPSHEET: 092J005  
 FOREST DISTRICT: SQUAMISH TSA: SOO

LATITUDE: **50°04'50"** LONGITUDE: **-123°09'08"**  
 UTM GRID: WGS84  
 ZONE: **10** EASTING: **489118** NORTHING: **5547603**  
 Engineered/Traversed By: JCH FORESTRY LTD.  
 Drawn By: JCH FORESTRY LTD.-DM  
 Date: 2012-12-07 Revised:

### Logging and Access Plan



Road/Trail Name	ROAD/TRAIL CLASSIFICATIONS (m)											
	Haul			Main			Secondary			Overland		
	Built	Roughed In	Located	Built	Roughed In	Located	Built	Roughed In	Located	Built	Roughed In	Located
F03	341											
F03B		287										
F03-1			257				242					
F03-1A									178			160
F03-2			639						149			
F03-2A			216						223			
F03-2B									300			
F03-3			153			336						
F03-3A												140
F03-4						594						
F03-4A									60			
F03-4B									224			
F03-4C									170			
<b>Total Phase A-B</b>	<b>341</b>	<b>287</b>	<b>1265</b>	<b>930</b>	<b>242</b>	<b>1304</b>						<b>300</b>



**F03**

Comp #	Opening	RBA	ha	Estimated Volume (m3)	Cy	Cy Vol (m3)	HB %	HB vol (m3)
F03	A	LR	0.1	34	25%	9	75%	26
F03	B	LR	0.4	170	15%	26	85%	145
F03	C	LR	0.7	298	5%	15	95%	283
F03	D	LR	0.6	255	8%	20	92%	235
F03	E	LR	0.5	213	5%	11	95%	202
F03	F	LR	0.3	128	10%	13	90%	115
F03	G	LR	0.5	213	3%	6	97%	206
F03	H	LR	0.2	85	3%	3	97%	82
F03	I	LR	0.3	128	27%	34	73%	93
F03	J	LR	0.3	128	12%	15	88%	112
F03	K	LR	0.6	255	10%	26	90%	230
F03	L	LR	0.6	255	15%	38	85%	217
F03	M	LR	0.6	255	15%	38	85%	217
F03	N	LR	0.3	128	5%	6	95%	121
F03	O	LR	0.4	170	5%	9	95%	162
F03	P	LR	0.8	320	5%	16	95%	304
F03	Q	LR	0.1	40	27%	11	73%	29
F03	R	LR	0.2	80	3%	2	97%	78
F03	S	LR	0.7	280	10%	28	90%	252
F03	T	LR	1.4	560	3%	17	97%	543
F03	U	LR	1.4	560	3%	17	97%	543
F03	V	LR	0.2	80	3%	2	97%	78
F03	W	LR	0.5	200	3%	6	97%	194
F03	X	LR	0.2	80	3%	2	97%	78
F03	Y	LR	0.2	80	15%	12	85%	68
Skid Trail	Right of Way		6.8	2,890	15%	434	85%	2,457
<b>Average</b>			<b>417.5 per Ha</b>					
<b>Total</b>			<b>18.9</b>	<b>7881.5</b>		<b>815.3</b>		<b>7066.2</b>

Note: Overland Trails not use in Volume Estimate AMV \$ 55.86

#### Operational Planning Legend

##### Forested Elements

- TEM-Site Series Map Polygons: 11729 10AMw
- Reserved Permanently
- Riparian Management Zone
- Wildlife Tree Patch
- Retention
- Riparian Recreation Corridor
- Recreation Element Mgmt. Zone
- Future Harvest Area
- Old Growth Mgmt. Area-declared

##### Natural Features

- NP, Openings, Commercial Use
- Free Growing
- Non-Free Growing
- Ungulate Winter Range
- Wildlife Habitat Area
- Community Watershed
- Resource Mgmt. Zone-special
- Park & Conservancy Area
- Scenic Area Bdy/VQO Polygons

##### Boundaries

- Community Forest Boundary
- Harvest Opening - Logged
- Compartment Unit Boundary
- Fuel Management Area
- Retention Systems: Low - 0-5m2 RBA, Moderate - 5-20m2 RBA, High - 20-40m2 RBA, Very High - 40+m2 RBA
- Silviculture Block Openings
- Indian Reservations
- Legal Lot
- Private land
- Special Use Permit

##### Roads

- Highway
- Permit Rds: Lic/FSR
- Non-Status Rd(except under active CP)
- Old Road-brushed in
- Road Upgrade
- Located Road
- Proposed Road
- Located Skid Trail
- Rehabilitated Road
- Station Marker
- Bridge: Built-Proposed-Debuilt

##### Culverts

- Add Culvert
- Existing Culvert
- Clean or Repair
- Culvert
- Remove & Replace
- Culvert
- Remove Culvert

##### Contours

- Index/Intermed. Contours
- Existing Snowmobile Trail
- Located Snowmobile Trail
- Mtn Bike Trail

##### Yarding Features

- Falling Corner
- Prop. Landing
- Helipad / Heli Service
- Helldrop / Zone
- Remote Fuel Site
- BackSpar Trail
- Yarding Direction

##### Resource Features

- Special Features
- Bear Den
- Raptor Nest
- Wildlife/Leave Tree
- Other
- Declared Res. Feat-Trails/Sites
- Rec. Res. Elements-Trails/Sites
- Lakes, Wetlands, Streams Class
- Riparian Stream Class S1-S4 Fish
- Riparian Stream Class S5-S6 No Fish
- Community Watershed Class S1-S4 No Fish
- NCD Streams
- Unclassified Streams
- Fish Sample
- Lakes L1 or L3 (inv.)
- Wetlands W1, W3 or W5
- Falling Features

**JCH FORESTRY LTD.**

**RICHMOND PLYWOOD CORPORATION LTD.**

SCALE 1:5000